



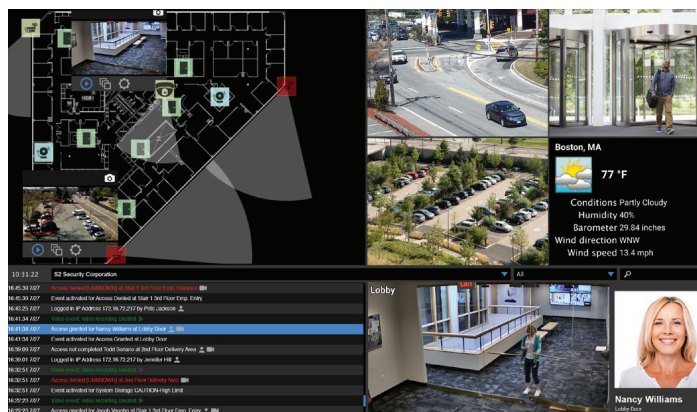
Network Node

Overview

The Network Node intelligent field panel handles distributed processing for NetBox™ access control and event monitoring systems. Access control and events from connected devices are aggregated to the NetBox browser-based interface for centralized system management.

The Network Node panel supports up to seven modular LenelS2 application blades for access control, inputs, outputs and temperature probes. Any LenelS2 application blades can be combined to fit deployment requirements. Blades are automatically recognized and addressed without jumpers or switches. External devices such as 12VDC card readers can be powered from the LenelS2 access control application blade.

A highly flexible component of any NetBox system, the Network Node panel enables customization and expansion of the system's capabilities.



Access control and event monitoring for connected devices are aggregated to the LenelS2 Magic Monitor® unified client.

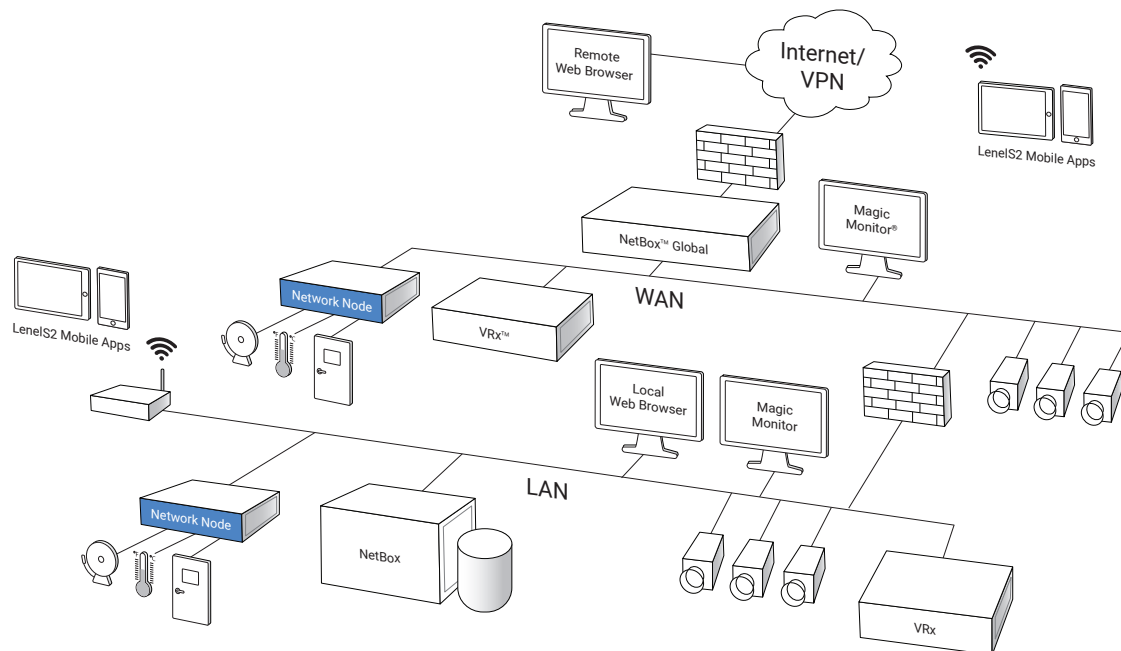
Key Features

Access Control

- **Blade Support:** Houses up to seven LenelS2 application blades for access control, inputs, outputs and temperature probes
- **Portals:** Supports up to fourteen doors or other access points
- **Reader Support:** Interfaces with OSDPTM, Wiegand and keypad reader technologies
- **Input Assignment:** Enables assignment of up to 56 supervised inputs
- **Output Assignment:** Enables assignment of up to 56 form C output relays
- **Temperature Inputs:** Monitors up to 56 analog temperature points

System

- **LenelS2 System Node:** Handles distributed access control and event monitoring
- **Solid State Design:** Extends product lifecycle, lowering total cost of ownership
- **Offline Availability:** Maintains access control capabilities even when connectivity to the NetBox controller is lost
- **Intuitive Configuration:** Utilizes embedded web interface for initial setup
- **Automatic Discovery:** Automatically connects to and authenticates with the NetBox controller upon configuration



Schematic only. Not a network diagram.

Specifications – Network Node

Access Control	
NetBox Software	Version 4.1.02 and later
Network Node Blade	M1-3200
Application Blades / SIOs	7
Portals	14
Access Levels	512
Supervised Inputs	56
Relay Outputs	56
Temperature Inputs	56
Credential Storage	150,000
Buffered Transactions	800,000
Hardware	
Storage	2GB Flash
Processor	TI AM3352 ARM
Memory (RAM)	512MB SDRAM
Operating System	Linux
Ethernet Ports	1
MTBF	297,000 hrs
Chassis	Wall mount or standard 4U rack mount
Dimensions (H, W, D)	Wall Mount: 17.0in x 15.0in x 6.75in (432mm x 381mm x 172mm) Rack Mount: 7.0in x 19.0in x 15.0in (178mm x 483mm x 381mm)
Weight	Wall Mount: 18 lbs (8.6 kg) Rack Mount: 17 lbs (7.7 kg)

Hardware (continued)	
Operating Temperature	32° – 95°F (0° – 35°C)
Storage Temperature	-4° – 158°F (-20° – 70°C)
Input Power	100 - 240 VAC, 50/60 Hz, 2.3A
Reader Output Power	12VDC, 250 mA/reader
BTU Maximum	184 per hour
Commissioning	Web configuration utility
Regulatory Approvals	UL, CE, FCC, RoHS
Warranty	2 years, hardware; 1 year, software

Client Requirements	
Operating System	Any
Browser	Chrome™, Internet Explorer®, Firefox® and Safari®*
Processor	Intel® Core™ i3 or higher
Memory (RAM)	4GB
Hard Drive	100GB minimum

Part Numbers	
S2-NN-E-WM	Supports up to 7 LenelS2 application blades, wall mount
S2-NN-E-RM	Supports up to 7 LenelS2 application blades, rack mount
S2-NN-E2R-WM	Includes 1 LenelS2 access control application blade with 6 available expansion slots, wall mount
S2-NN-E2R-RM	Includes 1 LenelS2 access control application blade with 6 available expansion slots, rack mount

* Refer to the latest Release Notes for browser version compatibility.



For more information, please visit lenel2.com.

Specifications subject to change without notice.

© 2024 Honeywell International Inc. All rights reserved. All trademarks are the property of their respective owners.