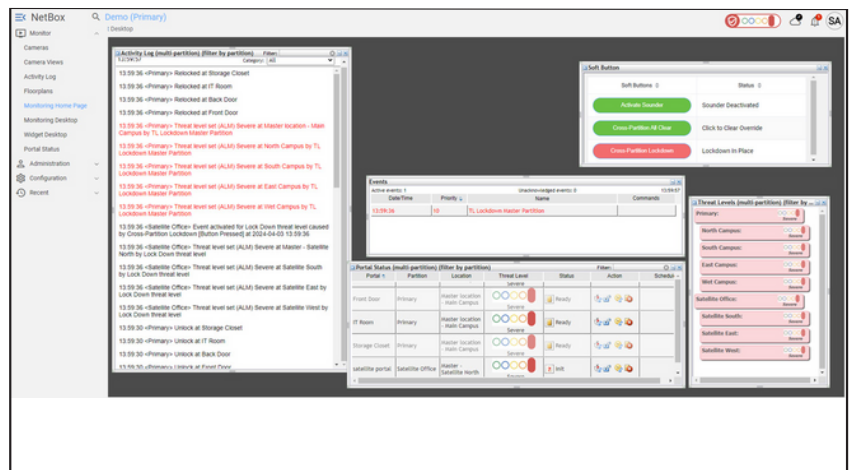


6.0 NetBox Software Version 6.0 for the NetBox, NetBox Extreme, NetBox Enterprise 50 / 100 / High Availability, and NetBox Virtual Machine

The latest advancements in the LenelS2 NetBox™ access control software version 6.0 are a result of our continuing journey towards enhanced usability, functionality, security, and integration capabilities. LenelS2 is committed to taking a proactive approach towards enhancing the overall user experience and system performance, while embracing innovative technologies like mobile credentials and enhanced APIs. Each feature contributes to making the system more robust, user-friendly, and aligned with evolving technological trends.

All-New Navigation Experience

Enhancements to the user interface deliver a seamless and intuitive experience, optimizing efficiency and enabling users to accomplish more with less effort. These updates reflect LenelS2's commitment to user-centric design, incorporating valuable feedback to enhance usability, increase engagement, and ultimately elevate overall satisfaction.



Wallet-based NFC credentials on Apple devices via the BlueDiamond App

No plastic cards or key fobs necessary. Add convenience, enhance security, and reduce costs by issuing NFC-based credentials directly to your Apple device.

Please note: Support for BlueDiamond NFC mobile credentials within NetBox v6.0 is available for NetBox systems in the North American market only.

New Monitoring Widgets

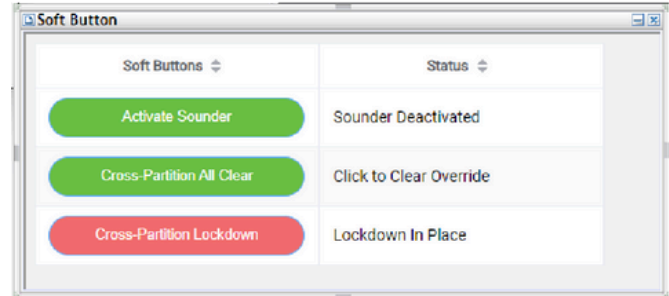
Occupancy

Know how many people are on-site, and where. With the Occupancy widget you can monitor your on-site person-count as well as view a Roll Call report of any given region with a single click.



Soft Buttons

Reduce the need for hard-wired push buttons. Use Soft Buttons to active and deactivate events to trigger a multitude of actions. With 30 actions available, you can unlock portals, send emails, or lock down your facility with the single click of a Soft Button.



or current state

Moving closer to feature parity between Network Nodes and Mercury controllers

The following node features are now available for use with Mercury controllers:

- 2-person Rule
- Keypad Commands
- Keypad Timed Unlock

Also included in v6.0 is support for Mercury firmware 2.0.2, which allows for integration with Aperio AH30 Gen5 hubs when used in Legacy Mode.

New APIs for improved system management allow for the ability to:

- Access portal states based on portal name, location, partition or current state
- Access a list of threat levels available in a partition which can then be used to set a threat level
- Access a list of locations in your NetBox for a specific NetBox partition
- Acknowledge alarm events, clear alarm event actions and set owners to alarm events
- Add duty log entry to an alarm event

Upgrade-Eligible Hardware

The following LenelS2 hardware is eligible for upgrade to version 6.0:

- NetBox Access Control & Event Monitoring System
- NetBox Extreme Access Control & Event Monitoring System
- NetBox Enterprise 50 / 100 / High Availability
- NetBox Virtual Machine Access Control & Event Monitoring System

If you have any additional questions, please reach out directly to your LenelS2 representative.



For more information, please visit [lenels2.com](https://www.lenels2.com).

Specifications subject to change without notice. © 2024 Honeywell International Inc. All Rights Reserved. All trademarks and service marks are the property of their respective owners.