



NetVR 700 Series

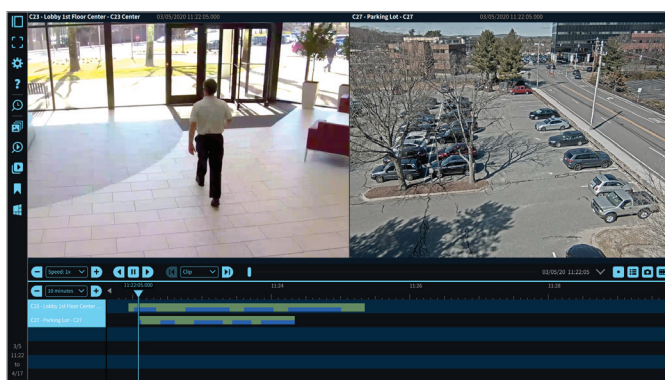
Overview

The full-featured NetVR™ video management system provides a unified access control and video surveillance experience when used in conjunction with the NetBox™ access control system and Magic Monitor® unified client.

NetVR 700 series servers support up to 128 IP cameras and up to 288TB of video storage, making them well suited for large security deployments. NetVR 700 series servers are available as stand-alone systems and also tightly integrate with NetBox access control systems.

Real-time video monitoring and recorded video playback are accessible through the Magic Monitor client. By clicking on an icon in the activity log, users can instantly play back recorded video associated with an event and save it to the case library. Additional features include on-screen PTZ controls and integration of live video views into floor plan graphics.

NetVR video management systems seamlessly fit into the NetBox ecosystem, allowing the entire solution to easily scale with organizational growth. The Linux-based NetVR server appliances are plug-and-play and operate similarly to other NetBox ecosystem products, making them easy to set up, configure and maintain.



Easily search, review and catalog video with Magic Monitor Forensics.

Key Features

Video Management

- **Cameras:** Supports up to 128 IP cameras
- **Real-Time Surveillance:** Allows for live video tours and on-screen PTZ controls using the Magic Monitor client
- **Forensic Search:** Locates recorded video of interest with a single click and saves it to the case library
- **Storage:** Supports up to 288TB of internal RAID 5 or RAID 6 video storage with hot spare option
- **Storage Management:** Provides a simple user interface to add or replace storage drives in the field

System

- **IP Video Server:** Delivers real-time and recorded video to client
- **Access Control Integration:** Integrates with NetBox access control systems for unified system management and administration
- **Customizable Monitoring Displays:** Provides customization of real-time monitoring displays, with single or multi-camera views
- **Mobile App:** Allows for mobile security management using the Mobile Security Professional® app



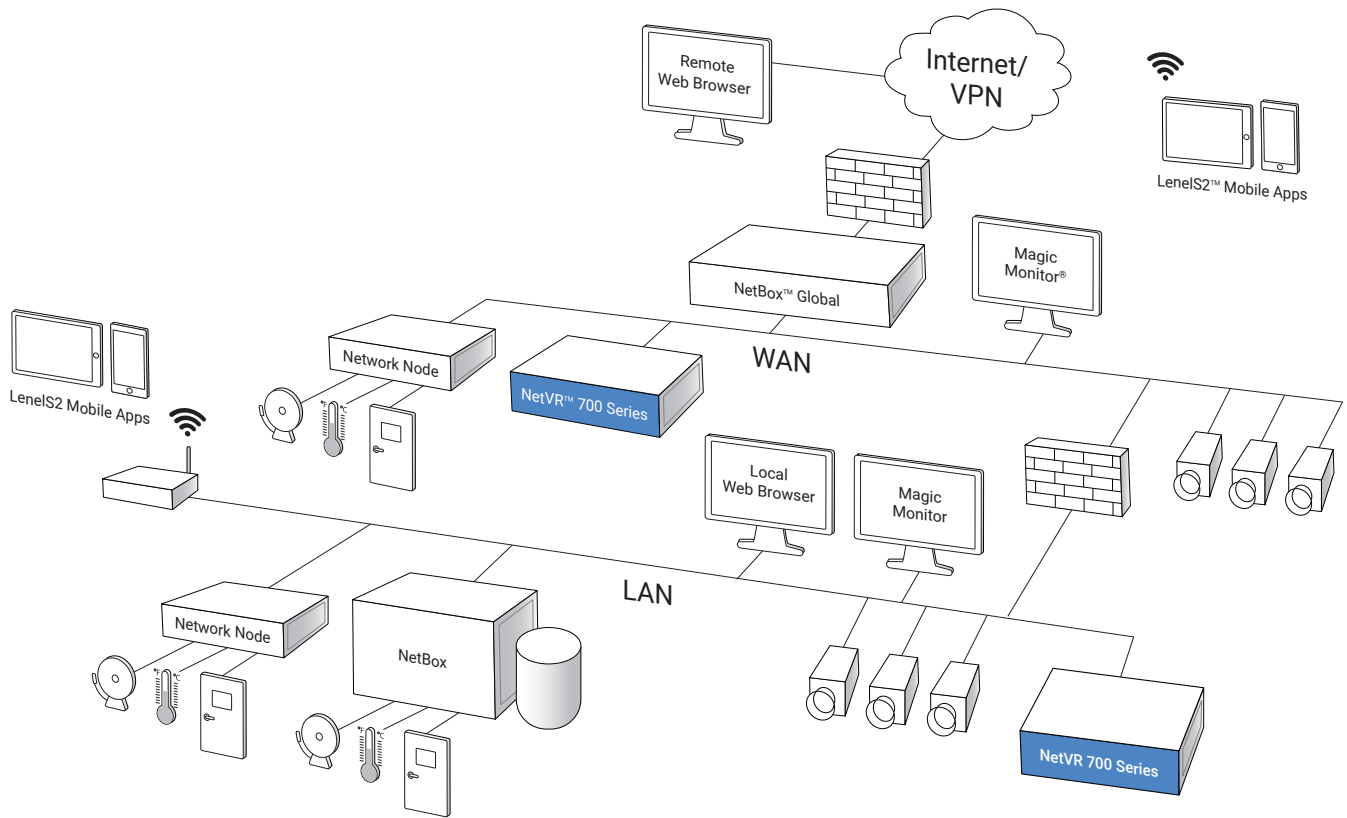
Specifications – NetVR 700 Series

NetVR 700

NetVR 750

Video Management		
IP Camera Streams	Up to 128	Up to 128
IP Camera Resolution	IP camera dependent	IP camera dependent
IP Camera Frame Rate	IP camera dependent	IP camera dependent
Compression Type	H.264 or H.265 (camera dependent)	H.264 or H.265 (camera dependent)
Appliance		
Video Storage	144TB maximum capacity using 4TB, 8TB or 12TB hot swappable 3.5in drives; 12 HDD slots	288TB maximum capacity using 4TB, 8TB or 12TB hot swappable 3.5in drives; 24 HDD slots
Storage Configuration	RAID 5 or RAID 6; optional hot spare	RAID 5 or RAID 6; optional hot spare
Processor	Intel® Xeon® Silver	Intel® Xeon® Silver
Memory (RAM)	16GB	16GB
Operating System	Ubuntu Linux	Ubuntu Linux
OS/Application Storage	240GB SSD	240GB SSD
Ethernet Ports	4	4
Max Video Throughput (Aggregate Inbound)	800 Mbps	800 Mbps
MTBF	41,200 hours	39,100 hours
Chassis	Standard 2U rack mount, rail kit included	Standard 2U rack mount, rail kit included
Dimensions (H, W, D)	3.4in x 19.0in x 27.6in (87mm x 482mm x 701mm)	3.4in x 19.0in x 32.8in (87mm x 482mm x 832mm)
Weight	73 lbs (33.1 kg) maximum	88 lbs (40.0 kg) maximum
Operating Temperature	50° – 95°F (10° – 35°C)	50° – 86°F (10° – 30°C)
Redundant Dual Power Supply	750W	1100W
Storage Temperature	-40° – 149°F (-40° – 65°C)	-40° – 149°F (-40° – 65°C)
Operating Environment	Humidity 80%, non-condensing 84°F (29°C)	Humidity 80%, non-condensing 84°F (29°C)
AC Input	100 – 240 VAC, 50/60 Hz, 10A/5A	100 – 240 VAC, 50/60 Hz, 12A/7A
BTU Maximum	2,891 per hour	4,100 per hour
Regulatory Approvals	UL, CE, FCC, RoHS	UL, CE, FCC, RoHS
Warranty	3 years, hardware; 1 years, software	3 years, hardware; 1 years, software
Client Requirements		
Operating System	Windows 10 (64 bit), macOS High Sierra and later	Windows 10 (64 bit), macOS High Sierra and later
Processor	Intel Core i3 or higher	Intel Core i3 or higher
Memory (RAM)	8GB minimum	8GB minimum
Hard Drive	100GB minimum	100GB minimum
Part Numbers		
	S2-NETVR700-G2: NetVR 700 appliance	S2-NETVR750-G2: NetVR 750 appliance
	S2-NETVR-1C: Single IP camera license, expandable up to 128 IP cameras	S2-NETVR-1C: Single IP camera license, expandable up to 128 IP cameras
	S2-4TB-HDD-G2: 4TB storage hard drive	S2-4TB-HDD-G2: 4TB storage hard drive
	S2-8TB-HDD-G2: 8TB storage hard drive	S2-8TB-HDD-G2: 8TB storage hard drive
	S2-12TB-HDD-G2: 12TB storage hard drive	S2-12TB-HDD-G2: 12TB storage hard drive
	S2-NETVR-RAID-HS: Hot spare configuration	S2-NETVR-RAID-HS: Hot spare configuration

Schematic Diagram - NetVR 700 Series



Schematic only. Not a network diagram.



For more information, please visit lenels2.com.

Specifications subject to change without notice.

©2018, 2021 Carrier. All Rights Reserved. All trademarks are the property of their respective owners. LenelS2 is a part of Carrier.

S2071221

