



# NetVR

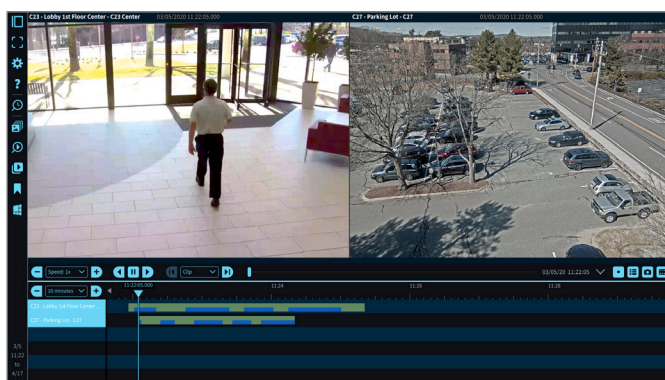
## Overview

The full-featured NetVR™ video management system provides a unified access control and video surveillance experience when used in conjunction with the NetBox™ access control system and Magic Monitor® unified client.

The NetVR server supports up to 16 IP cameras and up to 4TB of video storage, making the system well suited for small businesses. It is available as a stand-alone system and also tightly integrates with NetBox access control systems.

Real-time video monitoring and recorded video playback are accessible through the Magic Monitor client. By clicking on an icon in the activity log, users can instantly play back recorded video associated with an event and save it to the case library. Additional features include on-screen PTZ controls and integration of live video views into floor plan graphics.

NetVR video management systems seamlessly fit into the NetBox ecosystem, allowing the entire solution to easily scale with organizational growth. The Linux-based NetVR server appliance is plug-and-play and operates similarly to other NetBox ecosystem products, making it easy to set up, configure and maintain.



Easily search, review and catalog video with Magic Monitor Forensics.

## Key Features

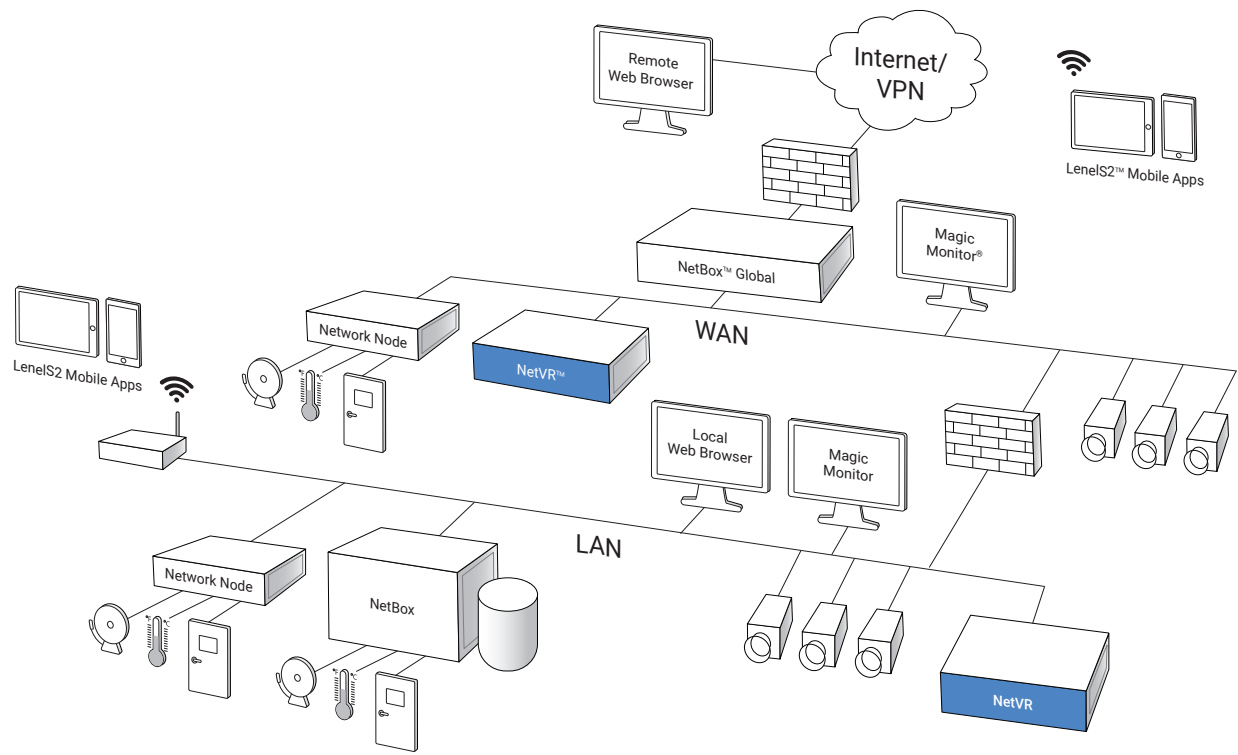
### Video Management

- **Cameras:** Supports up to 16 IP cameras
- **Real-Time Surveillance:** Allows for live video tours and on-screen PTZ controls using the Magic Monitor client
- **Forensic Search:** Locates recorded video of interest with a single click and saves it to the case library
- **Storage:** Supports up to 4TB of internal video storage

### System

- **IP Video Server:** Delivers real-time and recorded video to client
- **Access Control Integration:** Integrates with NetBox access control systems for unified system management and administration
- **Customizable Monitoring Displays:** Provides customization of real-time monitoring displays, with single or multi-camera views
- **Mobile App:** Allows for mobile security management using the Mobile Security Professional® app





Schematic only. Not a network diagram.

## Specifications – NetVR

Video Management	
IP Camera Streams	Up to 16
IP Camera Resolution	Camera dependent
IP Camera Frame Rate	Camera dependent
Compression Type	H.264 or H.265 (camera dependent)
Appliance	
Video Storage	2TB or 4TB HDD
Storage Configuration	JBOD
Processor	Intel® Core™ i3
Memory (RAM)	8GB
Operating System	Ubuntu Linux
OS/Application Storage	80GB SSD minimum
Ethernet Ports	2
Max Video Throughput (Aggregate Inbound + Outbound)	100 Mbps
MTBF	107,071 hours
Chassis	Standard 2U rack mount Surface mount
Dimensions (H, W, D)	3.5in x 19.0in x 14.58in (89mm x 483mm x 370mm)
Weight	12 lbs (21.4 kg) maximum

Appliance (continued)	
Operating Temperature	50° – 95°F (10° – 35°C)
Storage Temperature	-40° – 158°F (-40° – 70°C)
Operating Environment	Humidity 85%, non-condensing 35°C
AC Input	100 – 240 VAC, 50/60 Hz, 6A/3A
BTU Maximum	938 per hour
Regulatory Approvals	UL, CE, FCC, RoHS
Warranty	2 years, hardware; 1 year, software

Client Requirements	
Operating System	Windows 10 (64 bit), macOS High Sierra and later
Processor	Intel Core i3 or higher
Memory (RAM)	4GB minimum
Hard Drive	100GB minimum

Part Numbers	
S2-NETVR-2TB	IP camera licenses expandable up to 8 IP cameras; 2TB HDD
S2-NETVR-4TB	IP camera licenses expandable up to 8 IP cameras; 4TB HDD
S2-NETVR-1C	Single IP camera license



For more information, please visit [lenel2.com](http://lenel2.com).

Specifications subject to change without notice.

©2014, 2021 Carrier. All Rights Reserved. All trademarks are the property of their respective owners. LenelS2 is a part of Carrier.

S2061721

