



NetVR Software Solution

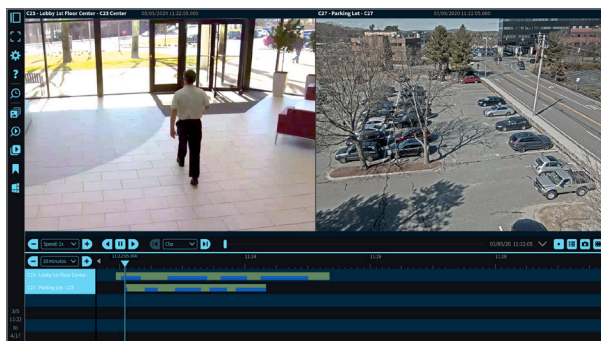
Overview

The full-featured NetVR™ video management system provides a unified access control and video surveillance experience when used in conjunction with the NetBox™ access control system and Magic Monitor® unified client.

NetVR Software Solution can be installed on user-preferred hardware. Supporting up to 128 IP cameras, the system is well suited for large security deployments. It tightly integrates with NetBox access control systems.

Real-time video monitoring and recorded video playback are accessible through the Magic Monitor client. By clicking on an icon in the activity log, users can instantly play back recorded video associated with an event and save it to the case library. Additional features include on-screen PTZ controls and integration of live video views into floor plan graphics.

NetVR Software Solution is ideal for organizations that choose to implement a video management solution on their preferred hardware platform. It seamlessly fits into the NetBox ecosystem, allowing the entire solution to easily scale with organizational growth. NetVR Software Solution operates similarly to other NetBox ecosystem products, making it easy to set up, configure and maintain.



Easily search, review and catalog video with Magic Monitor Forensics.

Key Features

Video Management

- **Cameras:** Supports up to 128 IP cameras
- **Real-Time Surveillance:** Allows for live video tours and on-screen PTZ controls using the Magic Monitor client
- **Forensic Search:** Locates recorded video of interest with a single click and saves it to the case library

System

- **IP Video Server:** Delivers real-time and recorded video to client
- **Access Control Integration:** Integrates with NetBox access control systems for unified system management and administration
- **Customizable Monitoring Displays:** Provides customization of real-time monitoring displays, with single or multi-camera views
- **Mobile App:** Allows for mobile security management using the Mobile Security Professional® app

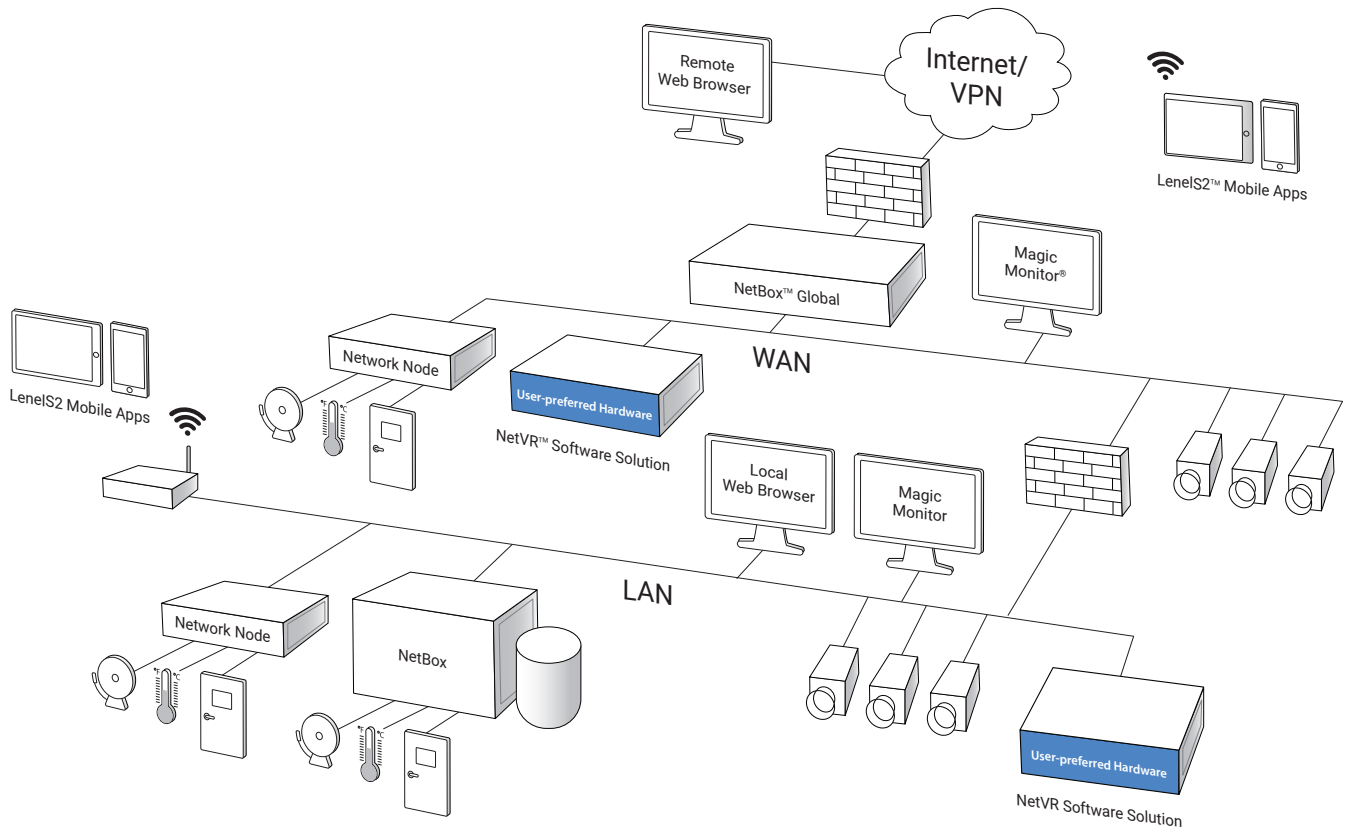


Specifications – NetVR Software Solution

64 Video Streams Maximum

128 Video Streams Maximum

Video Management		
IP Camera Streams	Up to 64 video streams	Up to 128 video streams
IP Camera Resolution	IP camera dependent	IP camera dependent
IP Camera Frame Rate	IP camera dependent	IP camera dependent
Compression Type	H.264 or H.265 (camera dependent)	H.264 or H.265 (camera dependent)
Minimum Hardware Requirements		
Video Storage	Customer determined (minimum 3 drives with 1TB storage per drive); RAID 5 or RAID 6 configuration recommended	Customer determined (minimum 3 drives with 1TB storage per drive); RAID 5 or RAID 6 configuration recommended
Storage Configuration	Customer determined (64-bit Controller)	Customer determined (64-bit Controller)
Processor	Intel® Xeon® E3	Intel® Xeon® E3
Memory (RAM)	8GB	8GB
Operating System	64-bit Ubuntu Linux 16.04 and 18.04	64-bit Ubuntu Linux 16.04 and 18.04
OS/Application Storage	80GB SSD minimum	80GB SSD minimum
Ethernet Ports	2; 1 for inbound and 1 for outbound	4; 3 for inbound and 1 for outbound
Max Video Throughput (Aggregate Inbound + Outbound) per NIC	200 Mbps	200 Mbps
Max Video Throughput (Aggregate Inbound + Outbound)	400 Mbps	400 Mbps
Client Requirements		
Operating System	Windows 10 (64 bit)	Windows 10 (64 bit)
Processor	Intel Core i3 or higher	Intel Core i3 or higher
Memory (RAM)	4GB minimum	4GB minimum
Hard Drive	100GB minimum	100GB minimum
Warranty		
Software	1 year	1 year
Part Numbers		
S2-NETVRSS	NetVR Software Solution	NetVR Software Solution
S2-SWVR-1C	Single NetVR Software Solution IP camera license, expandable up to 64 or 128 IP cameras. IP camera support is dependent on customer-provided hardware and must follow minimum specifications on NetVR Software Solution datasheet.	Single NetVR Software Solution IP camera license, expandable up to 64 or 128 IP cameras. IP camera support is dependent on customer-provided hardware and must follow minimum specifications on NetVR Software Solution datasheet.



Schematic only. Not a network diagram.



For more information, please visit lenel2.com.

Specifications subject to change without notice.

©2016, 2021 Carrier. All Rights Reserved. All trademarks are the property of their respective owners. LenelS2 is a part of Carrier.

S2061121

