



MicroNode Plus

Overview

The MicroNode™ Plus compact, intelligent field panel handles distributed processing for NetBox™ access control and event monitoring systems. Access control and events from connected devices are aggregated to the NetBox browser-based interface for centralized system management.

The MicroNode Plus panel supports up to two portals, four relay outputs with wet/dry selection, four inputs with programmable levels of supervision, and one temperature sensor input. The 12VDC auxiliary output can power devices such as a Request to Exit device or an alarm sounder.

Designed for localized access control and event monitoring, the MicroNode Plus panel is also an ideal retrofit solution. The seamless upgrade from legacy two-reader panels to the MicroNode Plus panel can be made without replacing readers, inputs or lock outputs.

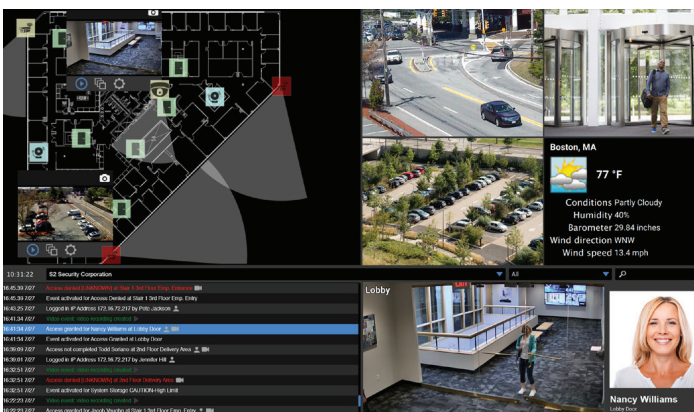
Key Features

Access Control

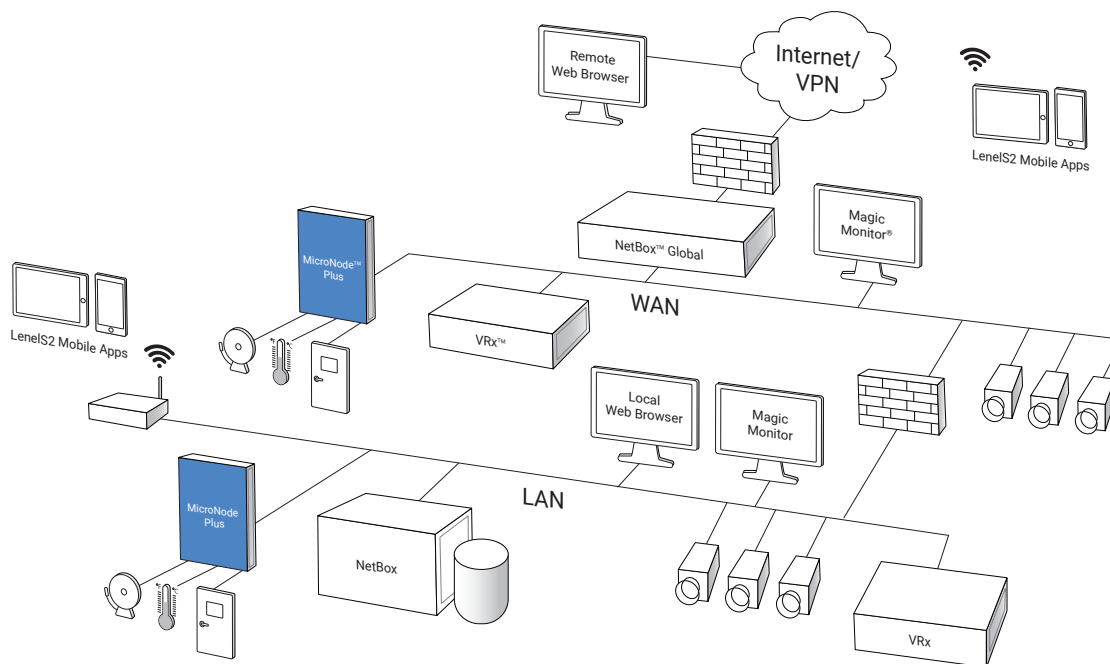
- **Reader Support:** Interfaces with Wiegand and keypad reader technologies
- **Input/Output Assignment:** Enables assignment of four input and four output relays to control doors and other end point devices
- **Temperature Input:** Includes one analog temperature sensor input
- **Retrofit Solution:** Replaces legacy two-reader panels without requiring new readers, inputs or lock outputs

System

- **LenelS2 System Node:** Handles distributed access control and event monitoring
- **Offline Availability:** Maintains access control capabilities even when connectivity to the NetBox controller is lost
- **Intuitive Configuration:** Utilizes embedded web interface for initial setup
- **Automatic Discovery:** Automatically connects to and authenticates with the NetBox controller upon configuration
- **Power Options:** Offers PoE Plus, PoE or 12VDC 5A power



Access control and event monitoring for connected devices are aggregated to the LenelS2 Magic Monitor® unified client.



Schematic only. Not a network diagram.

Specifications – MicroNode Plus

Access Control	
Portals	2
Access Levels	512
Supervised Inputs	4
Relay Outputs	4; 2 wet / dry selectable
Temperature Inputs	1
Credential Storage	150,000
Buffered Transactions	800,000
Hardware	
Processor	TI AM3352 ARM
Memory (RAM)	512MB SDRAM
Operating System	Linux
Ethernet Ports	1
MTBF	297,000 hrs
Chassis	Wall or ceiling mount
Dimensions (H, W, D)	11.34in x 8.0in x 2.57in (288mm x 203mm x 65mm)
Weight	3.2 lbs (1.45 kg)
Operating Temperature	32° – 95° F (0° – 35° C)
Storage Temperature	-4° – 158°F (-20° – 70°C)

Hardware (continued)	
Input Power	PoE Plus, PoE, 12VDC 5A
Output Power	<i>PoE Plus</i> : 1000mA (12 watts) @ 12VDC <i>PoE</i> : 500mA (6 watts) @ 12VDC 12VDC 5A: 2000mA (24 watts) @ 12VDC
BTU Maximum	204 per hour
Commissioning	Web configuration utility
Regulatory Approvals	UL, CE, FCC, RoHS
Warranty	2 years, hardware; 1 year, software

Client Requirements	
Operating System	Any
Browser	Chrome™, Internet Explorer®, Firefox® and Safari®*
Processor	Intel® Core™ i3 or higher
Memory (RAM)	4GB
Hard Drive	100GB minimum

Part Numbers	
S2-MNP	MicroNode Plus panel
S2-MNP-MP	MicroNode Plus panel with mounting plate

* Refer to the latest Release Notes for browser version compatibility.



For more information, please visit lenel2.com.

Specifications subject to change without notice.

© 2024 Honeywell International Inc. All rights reserved. All trademarks are the property of their respective owners.