

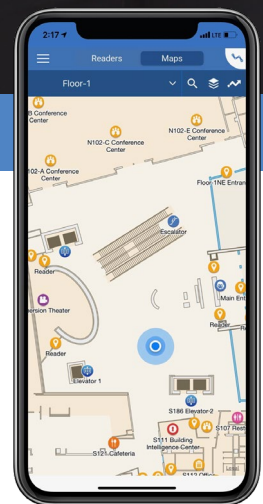


Help users quickly and easily find their way around a building.

BlueDiamond Indoor Location Service

The BlueDiamond™ Indoor Location service helps optimize building health and efficiency by providing convenient navigation for employees and visitors while working seamlessly with BlueDiamond mobile credentials for a touchless access experience. This subscription-based service helps users easily find their way around a facility – from corporate campuses, to entertainment venues, hospitals, convention centers and more. Users can quickly pull up a map showing their current location and search for points of interest such as meeting rooms, exits and more to get turn-by-turn directions.

Integration with BlueDiamond readers enables users to unlock doors straight from the map using voice commands or other BlueDiamond app features*. The BlueDiamond platform is an advanced solution in **Carrier's Healthy Buildings Program**, designed to help protect people and assets, and to help optimize building health and efficiency.



HEALTHYBUILDINGS

Indoor Location Service Features

Key Features for Employers

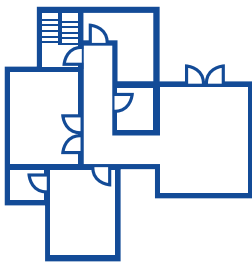
- Transform building maps into an interactive resource for employees and visitors by providing convenient facility-wide navigation
- Digitized maps are customized with facility-specific Points of Interest (POIs)
- Location-enabled hardware** installed throughout a building allows the app to triangulate the location of the user's smartphone for display on the interactive map
- Designed with an embeddable framework which allows the entire app or individual app features to be easily integrated into an existing application used by a company, school or other organization

Key Features for Users

- Users can quickly identify their location within a building through real-time blue dot positioning on an interactive map
- Quickly search or browse for POIs such as meeting rooms, exits and more
- Wayfinding allows users to easily navigate a building by providing turn-by-turn directions using searchable POIs
- Provides a more efficient way to gain access to secured locations with the intergration of BlueDiamond mobile credentials

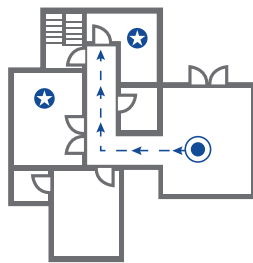
How it works

Subscribers will work with LenelS2 to digitize facility maps and define dynamic points of interest. Location-enabled hardware will be installed throughout the facility, allowing the app to triangulate the location of the user's smartphone for display on the interactive map. The Indoor Location service is hardware-agnostic—allowing it to work with multiple location-enabled hardware providers and technologies including Wi-Fi, BLE and virtual beacons.



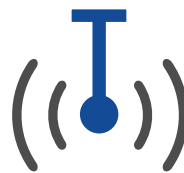
Map Development

Facility maps showing accessible areas of the building are digitized.



POIs & Routes

Points of interest (POIs) and routes are added to the map.



Beacon installation & configuration

An onsite team will install location-enabled hardware, set paths, and configure beacons.



Testing

Blue dot performance is tested onsite prior to launch.

* For more information on BlueDiamond mobile app features, please see the BlueDiamond mobile app datasheet.

** The Indoor Location service works with multiple location-enabled hardware providers and technologies including Wi-Fi, BLE and virtual beacons.

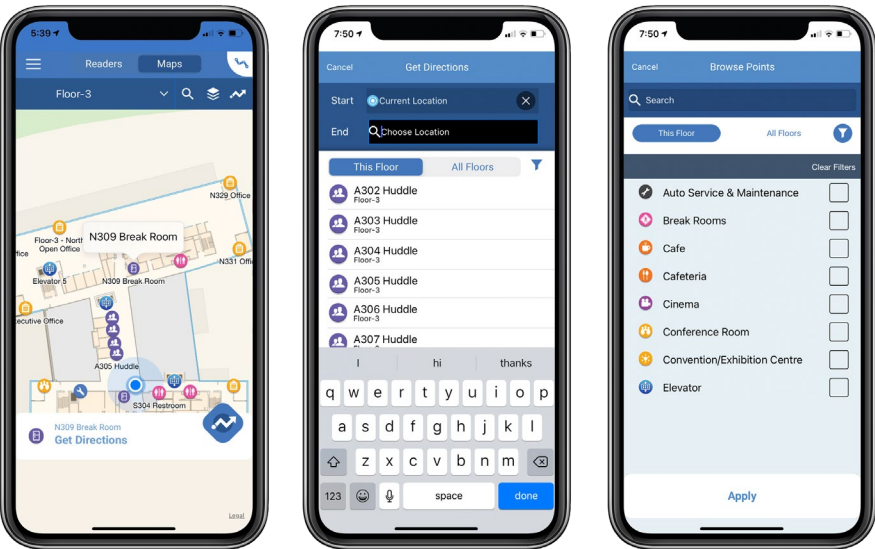
Facility-wide Navigation

Real-time, blue dot positioning allows users to quickly identify their location within a building.



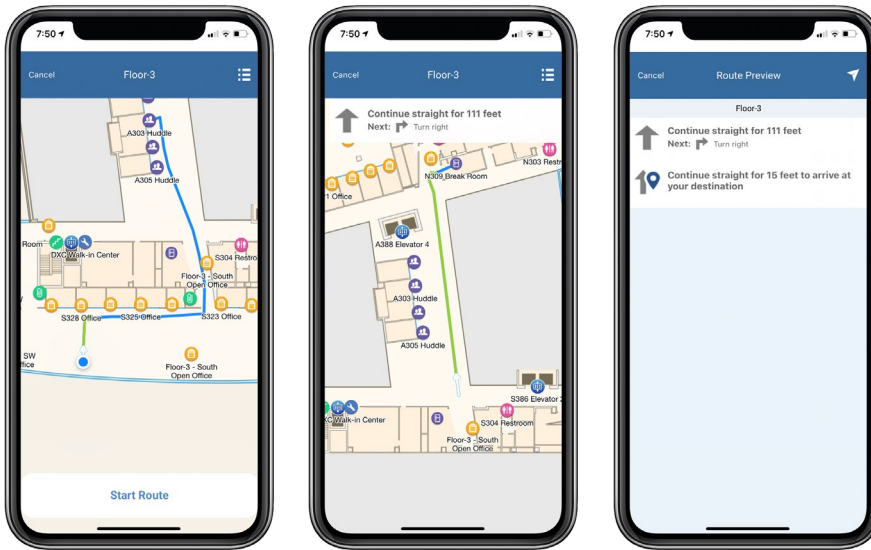
Points of Interest

Easily browse or search for Points of Interest (POIs) directly from the map or by utilizing the search function. Filters can be applied for different types of POIs such as conference rooms and break rooms or for specific locations within a building such as an individual floor.



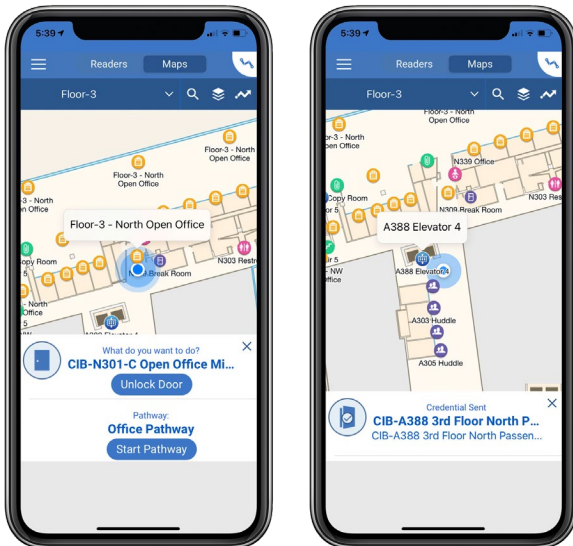
Wayfinding

Once a POI has been identified, Wayfinding guides users to the POI by providing a route preview and turn-by-turn directions.



Integrated with BlueDiamond mobile credentials

Integration with BlueDiamond mobile credentials allows users to unlock doors directly from the map.



Indoor Location is a subscription-based service and requires the purchase of an annual license. Currently available to customers in the United States and Canada only. Contact your local Value-Added Reseller (VAR) or your LenelS2 sales representative for more information.



[LenelS2.com](https://www.LenelS2.com)

(866) 788-5095

Specifications subject to change without notice.

©2021 Carrier. All Rights Reserved. All trademarks are the property of their respective owners. LenelS2 is a part of Carrier.
2021/03



HEALTHYBUILDINGS