



VRx 1500

Overview

The VRx™ next-generation video management system features advanced analytics based on deep learning technology. It provides a unified access control and video surveillance experience when used in conjunction with the NetBox™ access control system, Magic Monitor® unified client and Cumulus™ cloud-based service.

The VRx 1500 server supports up to 64 IP cameras and up to 48TB of video storage, making the system well suited for mid-sized deployments. It is available as a stand-alone system and also tightly integrates with NetBox access control systems.

Real-time video monitoring and recorded video playback are accessible through the Magic Monitor client. By clicking on an icon in the activity log, users can instantly play back recorded video associated with an event and save it to the case library. Additional features include on-screen PTZ controls and integration of live video views into floor plan graphics.

The VRx 1500 server includes the capability to manage and display crowdsourced video. Video footage submitted to the security team can be stored on the server and made available for forensic investigation.

The VRx system seamlessly fits into the NetBox ecosystem, allowing the entire solution to easily scale with organizational growth. The Linux-based server appliance is plug-and-play and operates similarly to other NetBox ecosystem products, making it easy to set up, configure and maintain.

Key Features

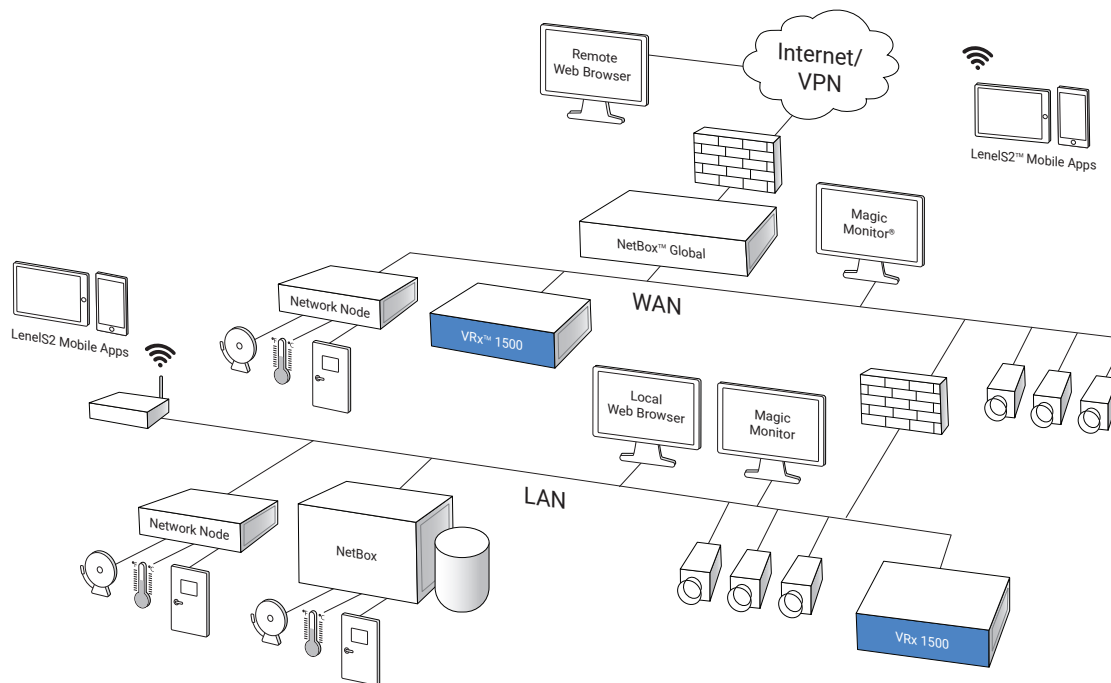
Video Management

- **Cameras:** Supports up to 64 IP cameras
- **ONVIF®:** Conforms to Profile T as an ONVIF registered product
- **High-Quality Video:** Supports 4K cameras and H.265 codec
- **Crowdsourced Video:** Manages video submitted from the organizational community, making it available for playback during forensic investigation
- **Real-Time Surveillance:** Allows for live video tours and on-screen PTZ controls using the Magic Monitor client
- **Forensic Search:** Locates recorded video of interest with a single click and saves it to the case library
- **Storage:** Supports up to 48TB of internal RAID 5 or RAID 6 video storage with hot spare option
- **Storage Management:** Provides a simple user interface to add or replace storage drives in the field

System

- **IP Video Server:** Delivers real-time and recorded video to client
- **Access Control Integration:** Integrates with NetBox access control systems for unified system management and administration
- **Customizable Monitoring Displays:** Provides customization of real-time monitoring displays, with single or multi-camera views
- **Mobile App:** Allows for mobile security management using the Mobile Security Professional® app





Schematic only. Not a network diagram.

Specifications – VRx 1500

Video Management

IP Camera Streams	Up to 64
IP Camera Resolution	Camera dependent, up to 4K
IP Camera Frame Rate	Camera dependent
Compression Type	H.264 or H.265 (camera dependent)

Appliance

Video Storage	48TB maximum capacity using 4TB, 8TB, or 12TB hot swappable 3.5in drives; 4 HDD slots
Storage Configuration	RAID 5; optional hot spare
Processor	Intel® Xeon® E
Memory (RAM)	8GB
Operating System	Ubuntu Linux
OS/Application Storage	240GB SSD
Ethernet Ports	2
Max Video Throughput (Aggregate Inbound + Outbound)	400 Mbps
MTBF	45,600 hours
Chassis	Standard 1U rack mount, rail kit included
Dimensions (H, W, D)	1.68in x 19.0in x 21.9in (43mm x 482mm x 556mm)

Appliance (continued)

Weight	30 lbs (13.6 kg) maximum
Operating Temperature	50° – 95°F (10° – 35°C)
Storage Temperature	-40° – 149°F (-40° – 65°C)
Operating Environment	Humidity 80%, non-condensing 84°F (29°C)
AC Input	100 – 240 VAC, 50/60 Hz, 5A/3A
BTU Maximum	1,356 per hour
Regulatory Approvals	UL, CE, FCC, RoHS
Warranty	3 years, hardware; 3 years, software

Client Requirements

Operating System	Windows 10 (64 bit), macOS High Sierra and later
Processor	Intel Core i3 or higher
Memory (RAM)	8GB minimum
Hard Drive	100GB minimum

Part Numbers

S2-VRX1500-G2	VRx 1500 appliance
S2-VRX-1C	Single IP camera license, expandable up to 64 IP cameras
S2-4TB-HDD-G2	4TB storage hard drive
S2-8TB-HDD-G2	8TB storage hard drive
S2-12TB-HDD-G2	12TB storage hard drive
S2-VR-RAID-HS	Hot spare configuration



For more information, please visit lenel2.com.

Specifications subject to change without notice.

©2019, 2021 Carrier. All Rights Reserved. All trademarks are the property of their respective owners. LenelS2 is a part of Carrier.

S2061721

